



# **Lighting Best International Ltd.**

## **Product specification**



**Model No.:LB-IS3203-Wxxx**

### **Product name:**

**400W-800W LED flood light/ stadium  
lights/highmast lights**

# 1. Main picture



(400W)



(600W)



(800W)



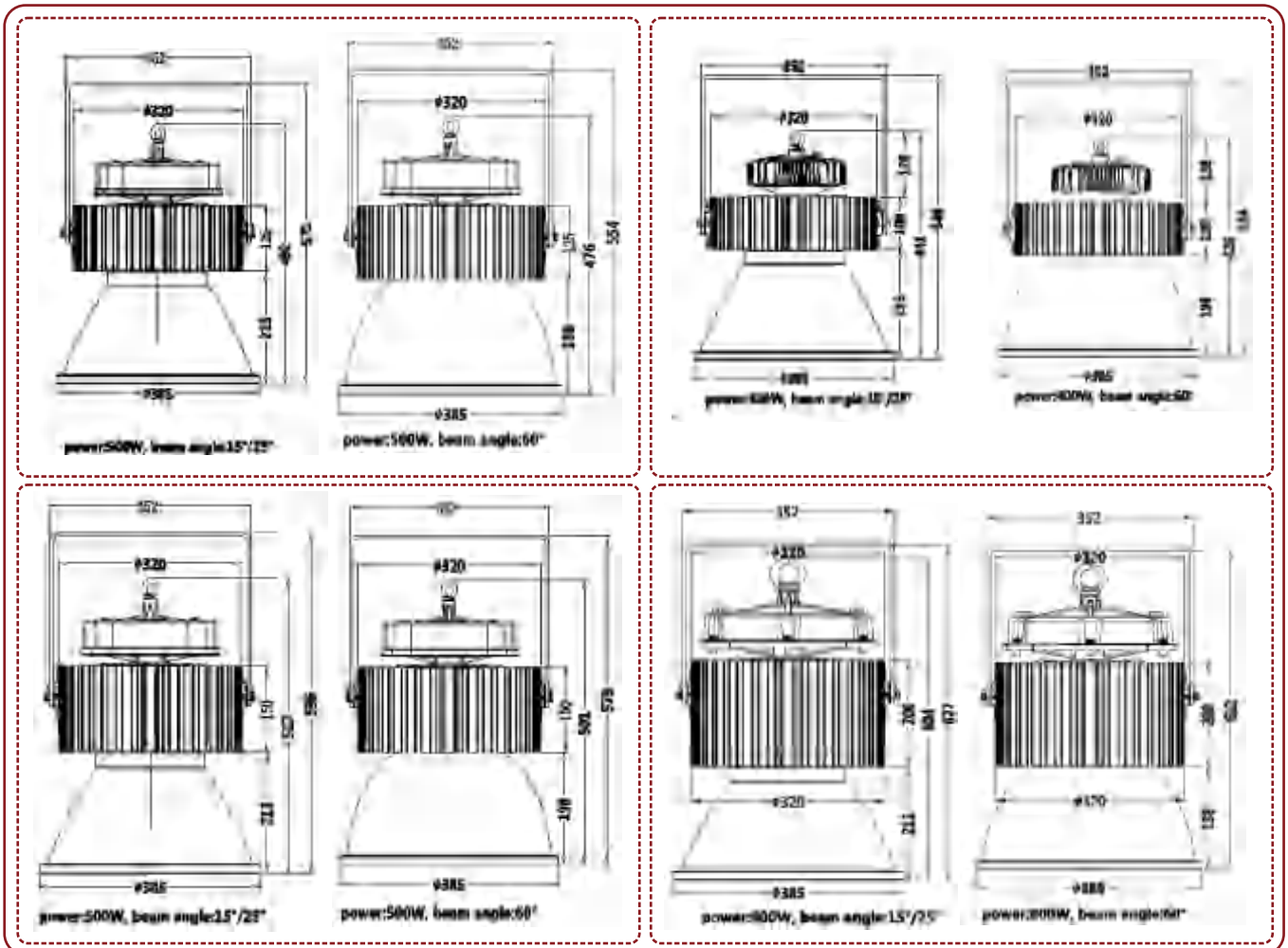
## 2. product feature

1. high quality extruded aluminum sun-flower pattern radiator, the heat dissipation system constructed by copper superconducting heat pipe, it makes this series of products specific and extraordinary heat transfer and heat dissipation effect, the product light decay is minimal; the lifetime is super long; and they are very solid and durable;
2. two choices of light sources
  - 2.1 flip-chip COB , it has longer lifetime and less decay than SMD, we would extend the warranty of light source 1 year based on the warranty of product;
  - 2.2 SMD3030, it has higher luminous efficiency, max to 180lm/W;
3. Optical toughened glass lens, dust-proof, corrosion-proof, anti-oxidation, weather resistance, strong marine resistance, wear resistance; easy to maintain;
4. IP grade : Ip65;
5. UL listed.

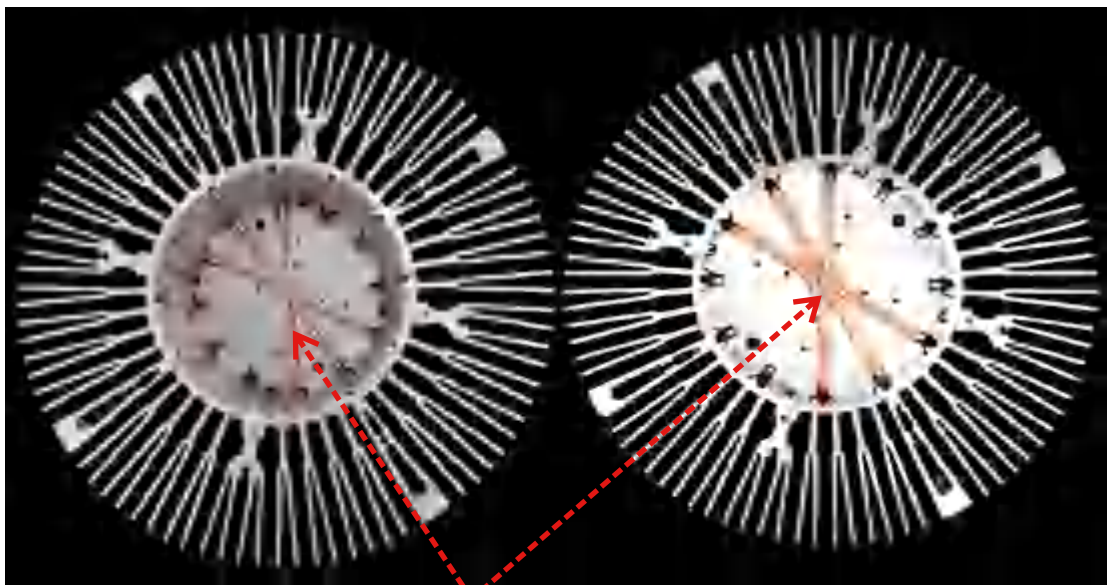
## 3. Quick Details

Keyword:	LED flood / stadium/highmast lights		Model Number(UL):	LB-IS320-WAAA	
power range	400 ~ 800W		optical structure design	optical glass combine with aluminium reflector	
support customize	yes		main material of Housing	extruded 6063 aluminum heatsink	
typical Input Voltage(V):	AC100 ~ 240V, 50/60HZ		power factor	> 0,95	
Driver Brand:	Meanwell/sosun/lightingbest/others		Extra function optional /Smart Functions:	Dimming/DALI /emergency lighting/ motion sensor/ZIGBEE intelligent control	
Place of Origin:	China		product Brand:	lightingbest or customize	
LED Chip Brand:	cree/philips/osram/citizen/bridgelux/SAN AN/others		Luminous Efficiency(lm/w):	COB:Max 150LM/W(when CCT6000K) SMD3030:Max 180LM/W(when CCT6000K)	
LED type	flip-chip COB/SMD3030(when 120° Beam angle)		Beam angle:	30° /60° /90° options	
Color Temperature(CCT):	3000k-6500k optional		CRI (Ra>):	70 ~ 90 optional	
lifetime(Hours)	50000		Warranty	3 ~ 5 Years	
certificate	CE, Rohs, UL		IP Rating:	IP65 Waterproof	
Working Temperature(°C): storage temperature(°C):	-35°C ~ +60°C -30°C ~ +50°C		Application:	Factory, Square, Parking Lot, advertising lighting, Garden, Public place, Exhibition hall, stadium etc.	
packing(mm)	power:400W power:500W power:600W power:800W	465*465*580 465*465*605 465*465*630 465*465*680	N.W./G.W. (KG)	power:400W power:500W power:600W power:800W	14,0 / 15,2 15,0 / 16,2 16,0 / 17,2 18,3 / 19,5

## 4.1 product diemension



## 4.2 product details (the heat dissipation system constructed by copper superconducting heat pipe)



the heatsink was made of high quality extruded 6063 aluminium , and it was built-in double-side Copper superconducting heat pipe, mkae it have strong ability of Heat dissipation and heat transfer, solve the big problem of heat and light decay of LED products.

## 4.3 product details



**steel hook**

**die-cast driver housing**

**outdoor silicon cable**

**high quality extruded  
aluminium heatsink**

**5mm thickness steel U  
bracket**

**316 stainless steel screws**

**316 stainless steel circle  
holder**

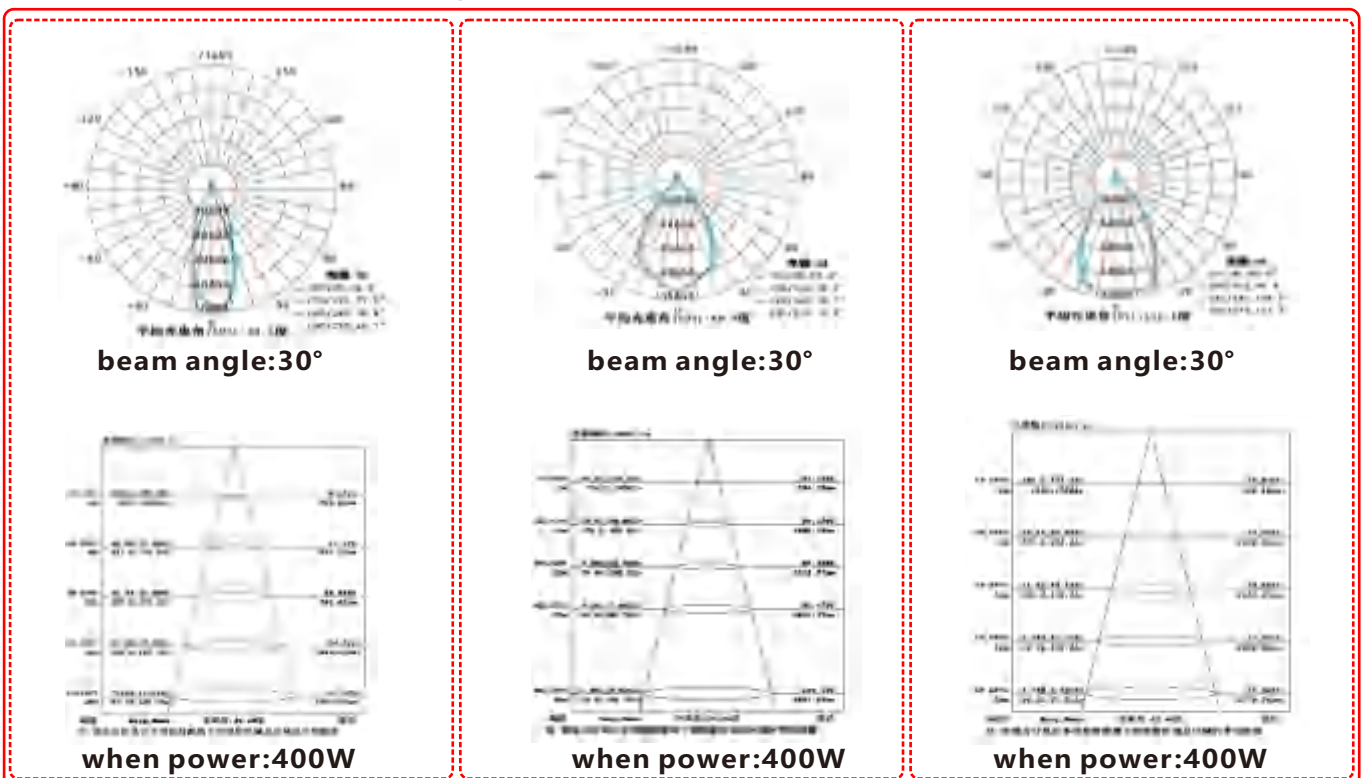
**high luminous efficiency  
3030 SMD LED chips**

**high quality high efficiency  
aluminium reflector**

## 4.4 IP grade:IP65



## 4.5 optical parameter and lights distributor curve



## 4.6 UL certificate

# CERTIFICATE OF COMPLIANCE

Certificate Number: 20150211-E472884  
Report Reference: E472884-20150129  
Issue Date: 2015-FEBRUARY-11

Issued to: LIGHTING BEST INTERNATIONAL LTD  
ZONE A FL12,BLDG 22 CHUANGYE INDUSTRIAL ZONE  
SHAPUWEI COMMUNITY SONGGANG ST BAOM  
SHENZHEN, 518104 CHINA

This is to certify that  
representative samples of

LIGHT-EMITTING-DIODE SURFACE-MOUNTED LUMINAIRES

Suitable for wall Locations, Models: LB-DM500-WAAA, LB-DM500-WBBB, LB-DM500-WAAA, LB-DM500-WBBB, LB-FS100-WAAA, LB-FS115-WAAA, LB-FS200-WAAA, LB-FS225-WAAA, LB-FS290-WAAA, LB-FS300-WAAA, LB-FS350-WAAA, LB-FS350-WBBB, LB-FS400-WAAA, LB-FS400-WBBB, LB-FS400-WCCC, LB-FS500-WAAA, LB-FS500-WBBB, LB-IM160-WAAA, LB-IM160-WBBB, LB-IM160-WCCC, LB-IM200-WAAA, LB-IM200-WBBB, LB-IM250-WAAA, LB-IM320-WAAA, LB-IM320-WBBB, LB-IM320-WCCC, LB-IM320-WDDD, LB-RS300-WBBB, LB-RS530-WAAA, LB-RS585-WAAA, LB-RS600-WAAA.

Have been investigated by UL in accordance with the  
Standard(s) indicated on this Certificate.

Standard(s) for Safety: UL 1598 and CSA C22.2 No. 250.0-00 - Luminaires  
UL 8750 - Light Emitting Diode (LED) Equipment for Use in Lighting  
Products

Additional Information: See the UL Online Certifications Directory at  
[www.ul.com/database](http://www.ul.com/database) for additional information.

Only those products bearing the UL Certification Mark should be considered as being covered by UL's  
Certification and Follow-Up Service.

Look for the UL Certification Mark on the product.

*Barthelme*

World WideWeb & All Other Online Registry (WWR) Registered and Published

UL LLC

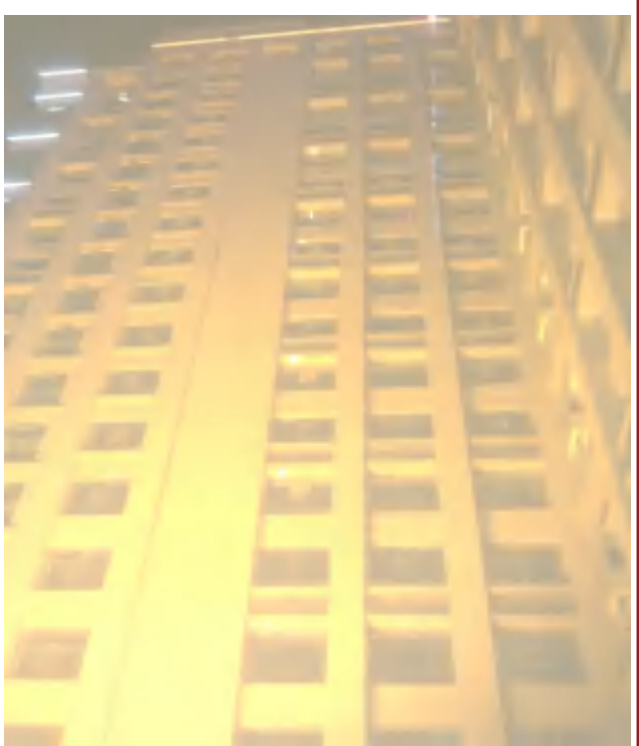
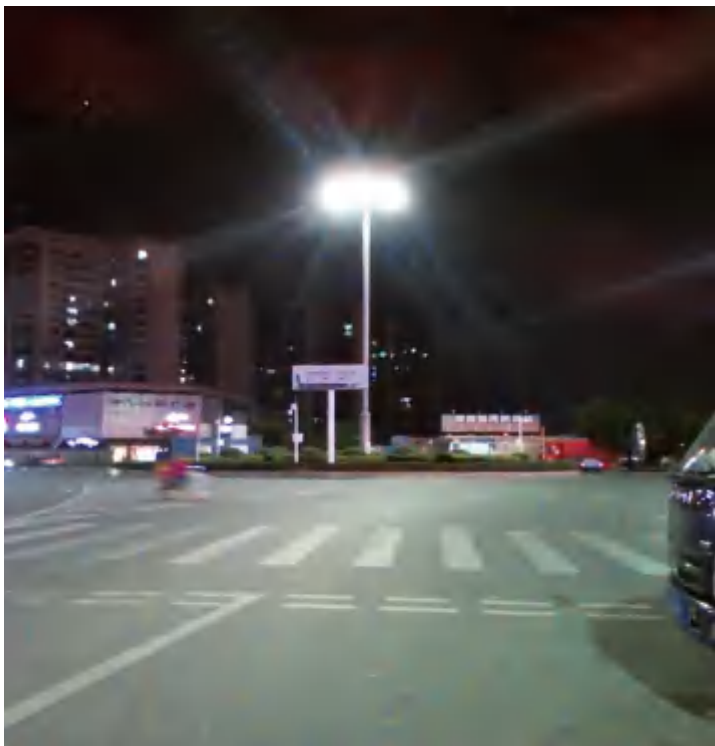
Any information and documentation regarding UL, its products, services or other UL LLC or any of its subsidiaries or affiliates, including UL's policies and procedures, shall be the property of UL LLC and shall not be disclosed to any third party without the prior written consent of UL LLC. For more information, please contact UL at [UL@ul.com](mailto:UL@ul.com) or [www.ul.com](http://www.ul.com).





## 5. application scene

general:Tunnel,Highway,Gas Station,Factory, Warehouse, Workshop, Square, Parking Lot, Supermarket, advertising lighting, Garden,Public place etc.



## 6 packing



## 7. Contact us

mobile/wechat/whatsapp/skype(same number)

**+86 13316916698**