



**Lighting Best International Ltd.**

**Product specification**



**Model No.:LB-PS200-W\*\*\***

**Product name:**

**40W-60W portable rechargeable emergency light**

# 1.MAIN PICTURE



**front view**



**top view**



**front view  
yellow housing**



**back view  
yellow housing**

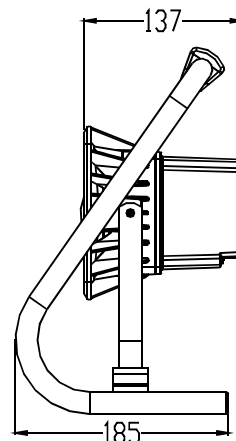
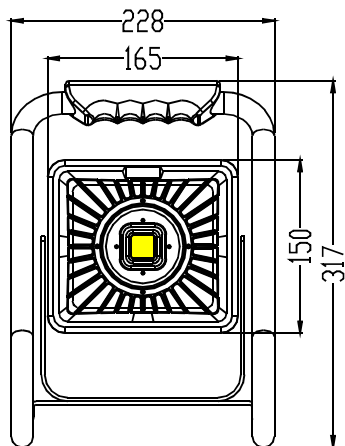
## 2. PRODUCT FEATURE

1. high-quality die-cast aluminum heatsink, product hollowed-out design, excellent heat transfer and dissipation effect, low light decay, it is solid、durable and long lifetime;
2. Outdoor UV-resistence PC Battery Box;
3. optical toughened glass lens, dustproof, waterproof, wear-resistant; easy to maintain.
4. grade A 18650 lithium battery, once fully charged can be used for more than 4 hours;
5. dimmable from 0~100%
6. IP grade :IP65.

## 3. QUICK DETAILS

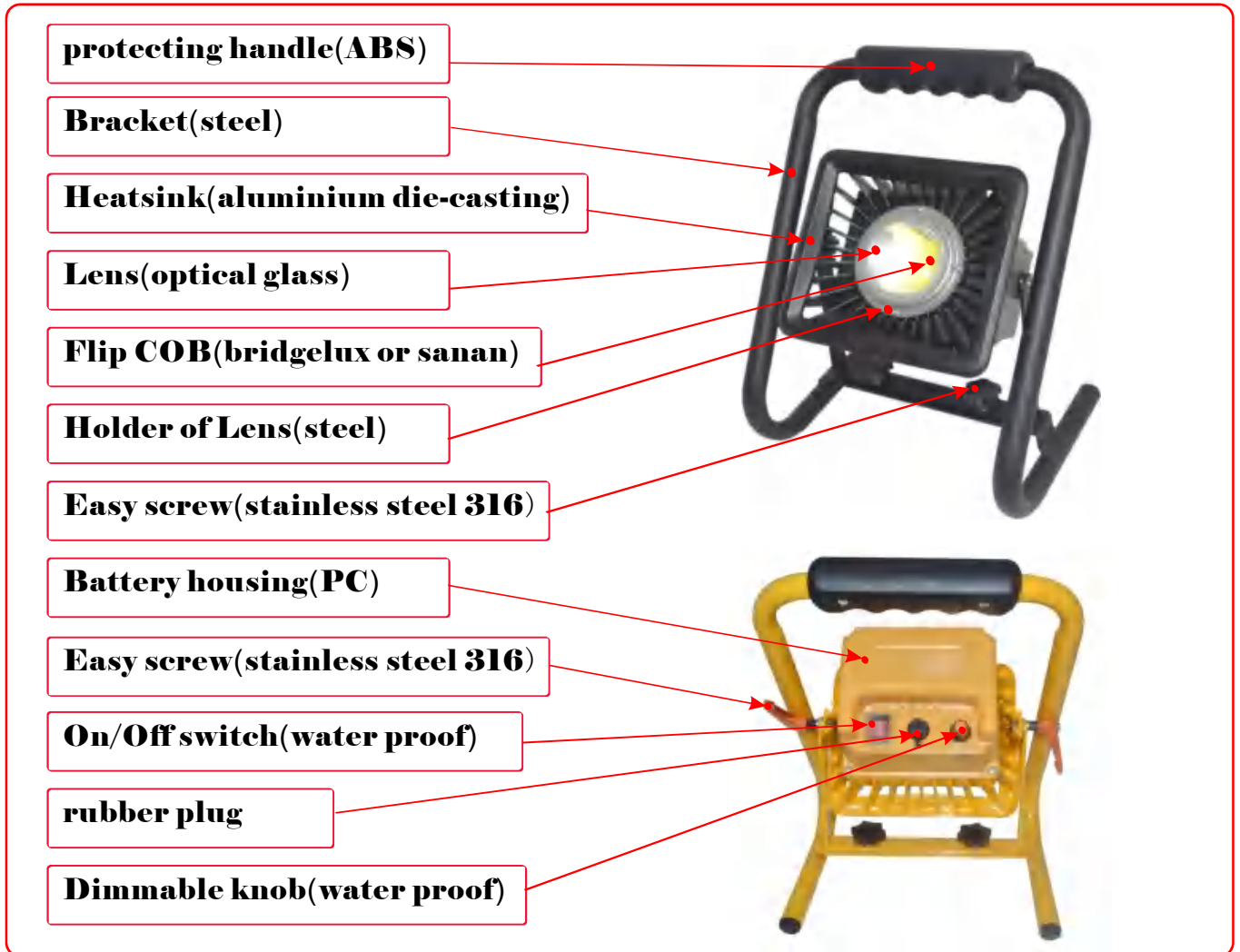
Keyword:	40W portable, rechargeable light 60W portable, rechargeable light	Application:	natural disaster lighting/camping/daily repairs/emergency lighting/night fishing
Model Number:	LB- PS200-W040 LB- PS200-W060	support customize	yes
Place of Origin:	China	Brand Name:	lightingbest or customize
actual power of LED ( W):	20/30 optional	main material of Housing	Die-cast of Aluminum, PC battery housing and glass lens
Lamp Luminous Flux(lm):	2600/3900 ( full brightness)	CCT available	3000K/4000K/5000K/5700K/6500K
Luminous Efficiency(lm/w):	max 130LM/W (when CCT6000K)	LED Chip Brand:	citizen/bridgelux/CREE/SANAN/others
LED type	flip COB	CRI (Ra>):	70 ~ 90 optional
Beam angle:	30° /60° /90° optional	battery	high capacity hig quality 18650 lithium
working time(Hours)	4/16 optional	battery capacity	18.6V 4AH (10pcs) 18.6V 6AH (15pcs)optional
Input Voltage(V):	adaptor DC24V	Warranty(except lithium battery):	3 Years lithium battery:
IP Rating:	IP65 Waterproof	certificate	CE、Rohs
Extra function optional /Smart Functions:	0~100% dimmable	accessory	yes (DC 24V adaptor)
Working Temperature(°C):	35 ~ 60	storage temperature	-30°C ~ +50°C
packing size(lamp)	370*260*235mm	N.W./G.W(kg)	2.7/3.2

## 4.1 PRODUCT DIEMENSION

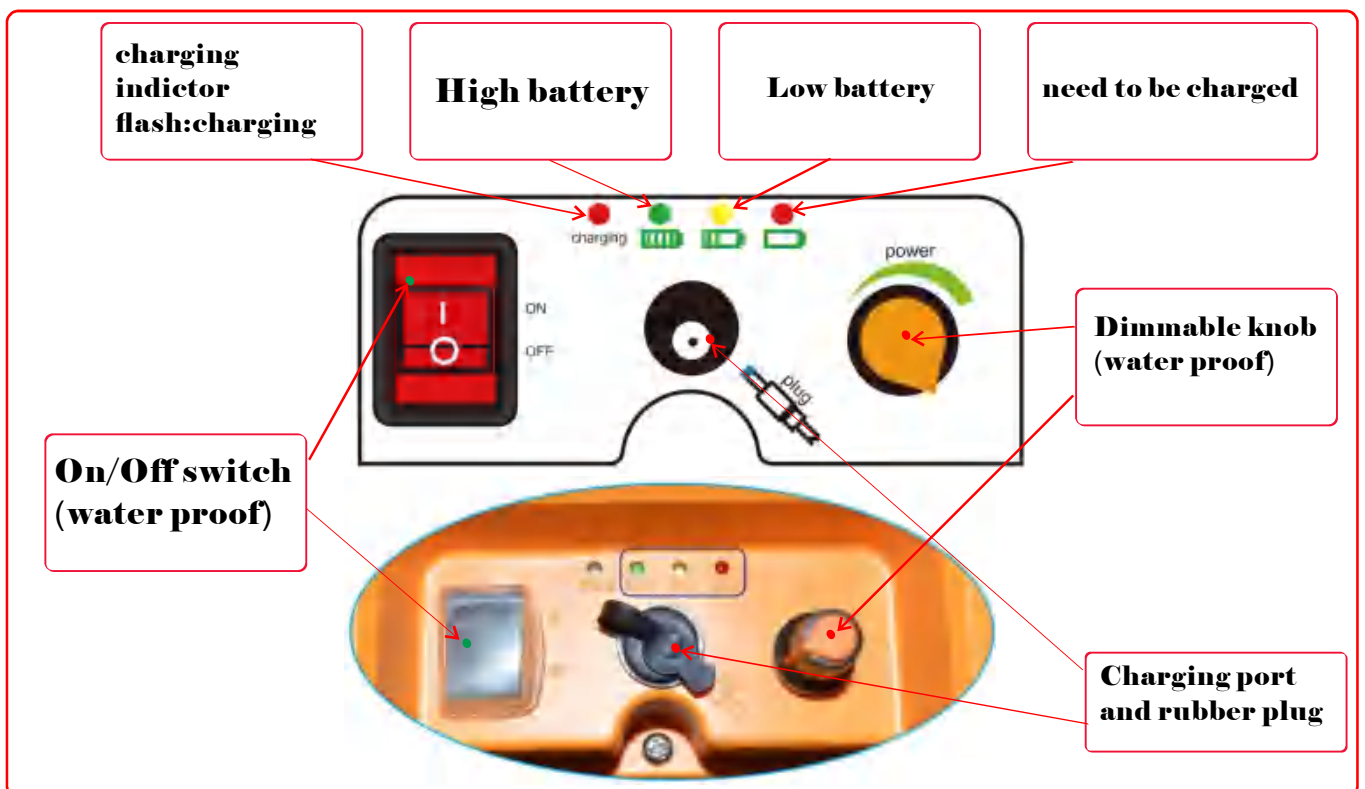


unit:mm

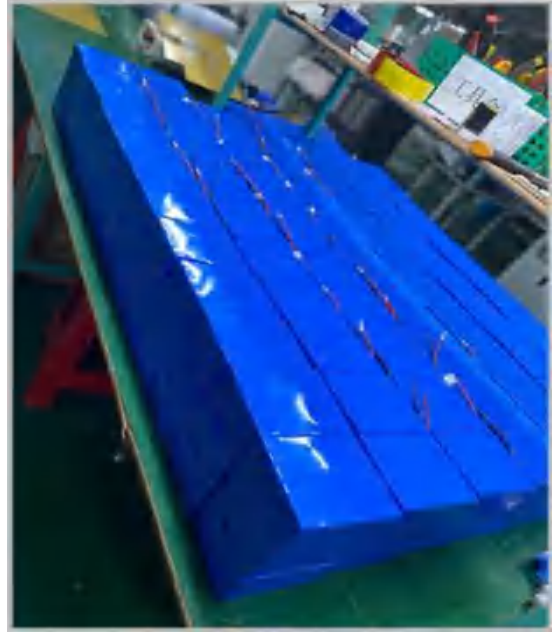
## 4.2 PRODUCT MATERIALS



## 4.3 FUNTIONAL PANEL



## 4.4 PRODUCT MATERIALS

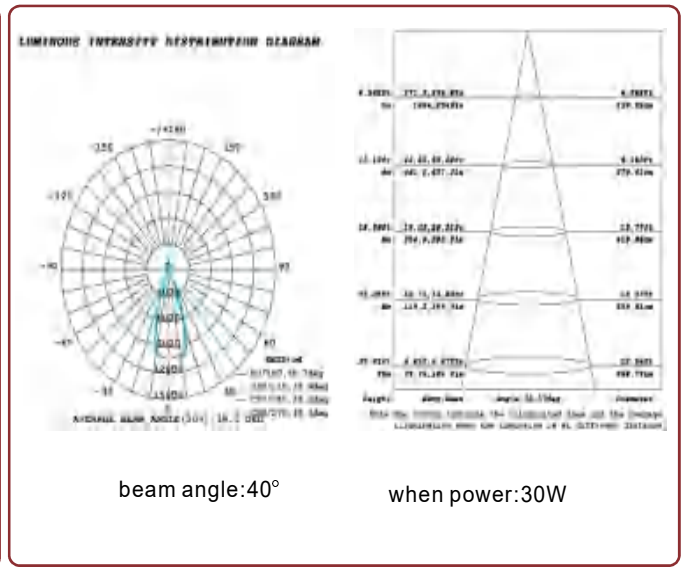
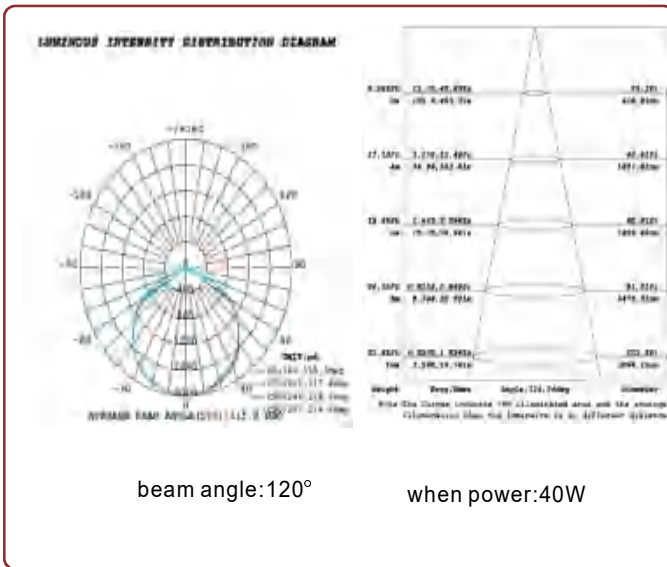


**high capacity high quality 18650 lithium**  
**18.6V 4AH (10pcs) optional**  
**18.6V 6AH (15pcs)**

## 4.5 IP 65



## 4.3 OPTICAL PARAMETER AND LIGHTS DISTRIBUTOR CURVE



## 4.4 IP 65 TEST REPORT

**Anbotek**  
Product Safety

Shenzhen Anbotek Compliance Laboratory Limited  
Page 1 of 7    Report No. R0114100535-1

**Shenzhen Anbotek Compliance Laboratory Limited**

### TEST REPORT

Report No.: R0114100535-1

Client: LIGHTINGBEST INTERNATIONAL LTD.

Address: F12, BLDG22 (Pujing Semiconductor Ind. park) Chuangyue Ind. Zone, Shapawei Community, Songgang, Bao'an District, Shenzhen, China

Manufacturer: LIGHTINGBEST INTERNATIONAL LTD.

Address: F12, BLDG22 (Pujing Semiconductor Ind. park) Chuangyue Ind. Zone, Shapawei Community, Songgang, Bao'an District, Shenzhen, China

Written by: *Andy Chen*

Inspected by: *Tony Tan*

Approved by: *Jeff Zhu*

Date of Received Sample: 2014.10-10

Date(s) of Test: 2014.10-10~2014.11-05



**Anbotek**  
Product Safety

Shenzhen Anbotek Compliance Laboratory Limited  
Page 2 of 7    Report No. R0114100535-1

**Shenzhen Anbotek Compliance Laboratory Limited**

### TEST REPORT

Sample name	LED Portable & Rechargeable Flood Light Series		
Model/type	LB-PS200-W010, LB-PS200-W020, LB-PS200-W030, LB-PS300-W030, LB-PS300-W040, LB-PS300-W050, LB-PS300-W060, LB-PS300-W070, LB-PS300-W080		
Inspection unit	LIGHTINGBEST INTERNATIONAL LTD.	Trademark	
Manufacturer	LIGHTINGBEST INTERNATIONAL LTD.	Inspection Category	Commissioned the inspection
Quantity	1 pc	Sample status	- / Intact
sample date	2014.10.10	Original number or production date	
Test based on	EN 60529:1991+A1:2000+A2:2012	Test items	IP65
Ambient temperature	25.01°		
Remark	This report is only responsible for the sample.		

# 4.3 UL CERTIFICATE

CERTIFICATE



**CERTIFICATE**  
Of Conformity  
EU Council Directive 2014/53/EU  
Electromagnetic Compatibility

Registration No.: AT011410052E-1  
Report No.: R011410052E-1  
Page 1 of 2

**Applicant:** LIGHTWREST INTERNATIONAL LTD.  
F12, B13523 (Chang Sui) Community, Tel. 08175-200544  
Shenhai District, Shanghai, Guangdong, China

**Product:** LED Portable & Rechargeable Flood Light Series

**Identification:** Model No.: See attachment on page 2

**Trade Mark:** 

**Rating:** DC12-34V IP68  
See attachment on page 2

**Test Standards:** EN 61010-1:2013  
EN 61547:2005  
EN 61010-2-2:2006+A1:2007+A2:2009  
EN 61010-2-1:2011

The certificate of conformity is based on an evaluation of a sample of the above-mentioned product. Technical report and documentation are at the applicant's disposal. This is to certify that the tested sample is in conformity with all provisions of Annex 3 of Council Directive 2014/53/EU in its latest amended version, referred to EMC Directive. The certificate does not imply assessment of the production and does not permit the use of LVD's logo. The applicant of the certificate is authorized to use this certificate in connection with EU declaration of conformity to Article 15 of the Directive.

  
 Nov. 04, 2014  
Date


Certified by:  
  
 Tom Chen  
 Manager

The CE Marking may only be used if all relevant and effective EU Directives are complied with




Shenzhen Anbotek Compliance Laboratory Limited  
11F, Building 1, SEC Industrial Park, No. 0403 Qianhai Road, Tel: (86)755-2600544  
Nanshan District, Shenzhen, Guangdong, China Fax: (86)755-26014772  
Http://www.anbotek.com Email: gpc@anbotek.com

CERTIFICATE



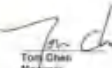
**CERTIFICATE**  
Of Conformity  
EU Council Directive 2014/30/EU  
Electromagnetic Compatibility

Registration No.: AT011410052E-1  
Report No.: R011410052E-1  
Page 2 of 2

**Attachment:**

Model No.	power
LB-PS200-W010	10W
LB-PS200-W020	20W
LB-PS200-W030	30W
LB-PS300-W030	30W
LB-PS300-W040	40W
LB-PS300-W050	50W
LB-PS300-W060	60W
LB-PS300-W070	70W
LB-PS300-W080	80W

  
 Nov. 04, 2014  
Date

Certified by:  
  
 Tom Chen  
 Manager

The CE Marking may only be used if all relevant and effective EU Directives are complied with




Shenzhen Anbotek Compliance Laboratory Limited  
11F, Building 1, SEC Industrial Park, No. 0403 Qianhai Road, Tel: (86)755-2600544  
Nanshan District, Shenzhen, Guangdong, China Fax: (86)755-26014772  
Http://www.anbotek.com Email: gpc@anbotek.com

CERTIFICATE



**CERTIFICATE**  
Of Conformity  
Low Voltage Directive 2014/35/EU

Registration No.: AT011410052E-1  
Report No.: R011410052E-1  
Page 1 of 2

**Applicant:** LIGHTWREST INTERNATIONAL LTD.  
F12, B13523 (Chang Sui) Community, Tel. 08175-200544  
Shenhai District, Shanghai, Guangdong, China

**Product:** LED Portable & Rechargeable Flood Light Series

**Identification:** Model No.: See attachment on page 2

**Trade Mark:** 

**Rating:** DC12-34V IP68  
See attachment on page 2

**Test Standards:** EN 61010-1:2006+A1:2009  
EN 61010-2-1:2011  
EN 62471:2008  
EN 62473:2010

The certificate of conformity is based on an evaluation of a sample of the above-mentioned product. Technical report and documentation are at the applicant's disposal. This is to certify that the tested sample is in conformity with Low Voltage Directive 2014/35/EU relating to electrical equipment designed for use within certain voltage levels. The certificate does not imply assessment of the series-production of the product. The applicant of the certificate is authorized to use this certificate in connection with EU declaration of conformity specified in Article 15 and Annex IV of the Directive.

  
 Nov. 04, 2014  
Date

Certified by:  
  
 Jeff Zhu  
 Manager

The CE Marking may only be used if all relevant and effective EU Directives are complied with




Shenzhen Anbotek Compliance Laboratory Limited  
11F, Building 1, SEC Industrial Park, No. 0403 Qianhai Road, Tel: (86)755-2600544  
Nanshan District, Shenzhen, Guangdong, China Fax: (86)755-26014772  
Http://www.anbotek.com Email: gpc@anbotek.com

CERTIFICATE



**CERTIFICATE**  
Of Conformity  
Low Voltage Directive 2014/35/EU

Registration No.: AT011410052E-1  
Report No.: R011410052E-1  
Page 2 of 2

**Attachment:**

Model No.	power
LB-PS200-W010	10W
LB-PS200-W020	20W
LB-PS200-W030	30W
LB-PS200-W040	40W
LB-PS300-W040	40W
LB-PS300-W050	50W
LB-PS300-W060	60W
LB-PS300-W070	70W
LB-PS300-W080	80W

  
 Nov. 04, 2014  
Date

Certified by:  
  
 Jeff Zhu  
 Manager

The CE Marking may only be used if all relevant and effective EU Directives are complied with




Shenzhen Anbotek Compliance Laboratory Limited  
11F, Building 1, SEC Industrial Park, No. 0403 Qianhai Road, Tel: (86)755-2600544  
Nanshan District, Shenzhen, Guangdong, China Fax: (86)755-26014772  
Http://www.anbotek.com Email: gpc@anbotek.com

## 5. APPLICATION SCENE

### General application:

**natural disaster lighting, camping, daily repairs, emergency lighting/night fishing, etc.**



## 6. CONTACT US

mobile/wechat/whatsapp/skype(same number)

**+86 13316916698**